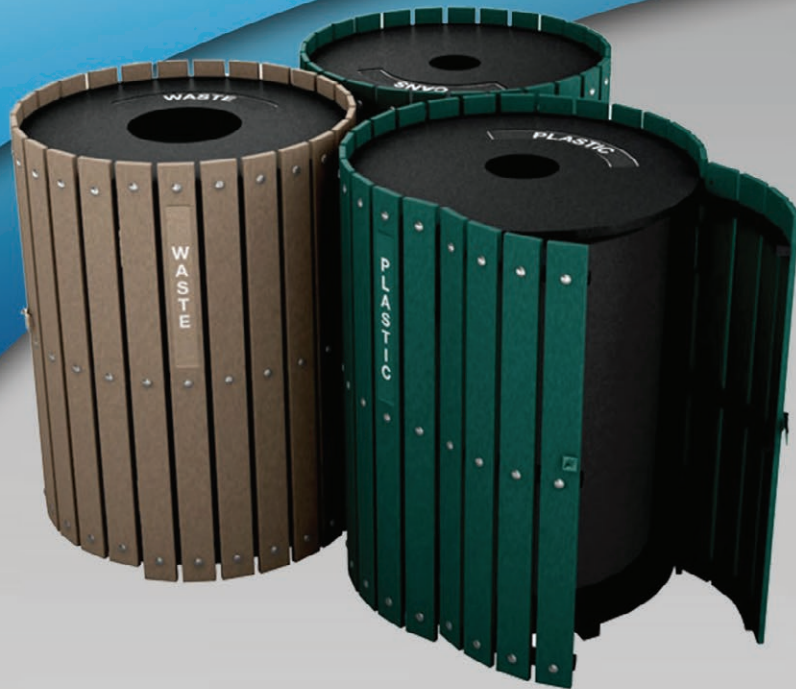


recycle away

Systems & Solutions

PO Box 1757
 Brattleboro, VT 05302
 1-800-664-5340
 www.recycleaway.com



TYPE 2 N1 COLLECTION

Key features:

- Constructed with 97% pure Type 2 recycled plastic
- Offered in a variety of colors
- Attractive solution for recycling programs
- Opening identification and restrictive
- Rigid liner included

Available Colors:

Plain panel colors



Material Aesthetics:

- Manufactured from high-grade of recycled HDPE
- Top-of-the-line pigments and UV inhibitors

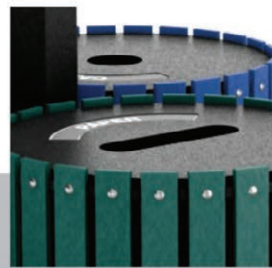


Dome Top Option



Reinforced Doors

To prevent warping due to changing weather environments.



Restrictive Openings

Keep recycling streams from getting contaminated - all at no extra cost.



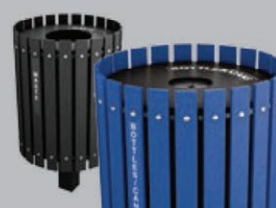
Opening IDs

Clearly labeled waste and recycling streams help identify openings and reduce cross contamination.



Split Color Units

Make recycling efforts known by changing the colors of each section.



Permanent Mount Option

Securely mount barrels to the ground. 36" post is attached to bottom of container and must be buried 24" deep.



Replacement Lid

Black flat lid with 9" diameter hole. Also available in a variety of openings.



Lid with Handle

Solid handle lid available for complete concealment of waste



Lid with Decal

Custom lid decals available. Contact us for a quote.



Replacement Liner

Round rigid liners feature handles for quick and easy waste removal.



Secure Lid

Braided steel cable with locking grip securely fastens lid to receptacle preventing theft.



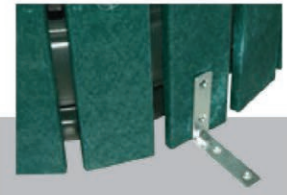
Ash Tray

Steel ash trays available in 4" x 7" and 6" x 7" sizes.



Turf Anchor Kit

Secure furniture into the ground and prevent theft. Includes (1) rod and (1) anchor.



Concrete Anchor Kit

Securely attach bin to concrete with this kit.

Configurations

Single

Double

Triple

Topload



*Available in 10-55 Gallon Capacities

TYPE-2 Material

Type-2 Material is impervious to insects, moisture and mold, meaning it won't rot, splinter or become dinner for pests as wood often does. Added UV inhibitors keep its colors stable while bonding agents create complete molecular linkage for optimum structural integrity.

- Manufactured from high-grade of recycled HDPE, and unlike other plastic recycling centers, contains no foam fillers
- Top-of-the-line pigments and UV inhibitors are used to maintain color for decades



Warranty

Nex-Terra offers a three year limited warranty on all of our products to be free from defects in workmanship and/or material(s). Nex-Terra makes no warranty with respect to either the merchantability of our products, or their suitability for any specific purpose or use.